

# IOP 2020

*by* Desi Widyaningsih

---

**Submission date:** 27-Sep-2022 09:28AM (UTC-0400)

**Submission ID:** 1910360537

**File name:** aningsih\_2020\_IOP\_Conf.\_Ser.\_Earth\_Environ.\_Sci.\_473\_012111.pdf (568.11K)

**Word count:** 1953

**Character count:** 10394

PAPER · OPEN ACCESS

## Analysis of induced voltage impacts of the Southern Sulawesi power system with integration of industrial load and wind power plant

3  
To cite this article: D Widyarningsih *et al* 2020 *IOP Conf. Ser.: Earth Environ. Sci.* **473** 012111

View the [article online](#) for updates and enhancements.

## Analysis of induced voltage impacts of the Southern Sulawesi power system with integration of industrial load and wind power plant

D Widyaningsih<sup>1,2</sup>, M B Nappu<sup>1,2</sup> and A Arief<sup>1,2</sup>

<sup>1</sup>Center for Research and Development on Energy and Electricity, Hasanuddin University, Makassar 90245, Indonesia

<sup>2</sup>Department of Electrical Engineering, Hasanuddin University, Gowa 92119, Indonesia

E-mail: bachtiar@engineer.com, desiwidyaningsih.dw@gmail.com

**Abstract.** Lightning strikes are one of the main causes of power outages that can result in dangerous conditions because of the high lightning strike current that may damage the electrical equipment. This study investigated the transient voltage of the Southern Sulawesi electricity system by considering the integration of 150 kV substations of Sengkang LNG and one wind power plant. Because of the integration plan, therefore it is necessary to analyse the impact of lightning strikes since it changes the network's structure. This research will simulate lightning strikes by modelling and analysing fluctuations during interference.

### 1. Introduction

At this time, the need for electrical energy is increasing in line with the development of new technologies. This must be followed by improvement in the electrical energy system, which must have high quality and reliability [1]. One of the ways that can be done to meet the increase of electricity needs is construction of renewable energy based generating plants [2], i.e. wind power plant, including in the Southern Sulawesi power system. The detail of the Southern Sulawesi power system can be seen in [3–5].

Liquefied Natural Gas (LNG) is natural gas that has been processed to eliminate its impurities and hydrocarbons then condensed into a liquid in pressure atmosphere by cooling it at a temperature of -160°C. PT. South Sulawesi LNG is one of the companies that engaged in the field of exploration of LNG. To meet their needs of electricity, PT. South Sulawesi LNG needs to construct new generating power plant. However, considering the time and the study for the design is quite long as well as the necessary cost of investment is quite large, then other alternative that can be done to meet their electricity needs is by building new 150 kV main substation connected to the Southern Sulawesi power system. By the addition of this new large load connected to a new 150 kV main substation then the required additional electricity supply is also large that certainly will have significant impact to the grid. The addition of this new load and substation will also affect the protection system. Therefore, it is important to assess the performance of the arrester during a strike after the integration of this new substation. Furthermore, it is necessary to perform an impulse stress analysis after the integration of the 150 kV Sengkang LNG substation into the Southern Sulawesi electricity system. Protection against lightning strikes can be done by placing a lightning rod transmission line to avoid the potential for



Content from this work may be used under the terms of the [Creative Commons Attribution 3.0 licence](https://creativecommons.org/licenses/by/3.0/). Any further distribution of this work must maintain attribution to the author(s) and the title of the work, journal citation and DOI.

instability and load release [6]. In this study, the lightning strikes on the 150kV transmission line will be analyzed by looking at the condition of the voltage over time when interference occurs.

**2. Methods**

The simulation is done by assuming a lightning strike occurs at a high 150 kV transmission line between Sengkang substation and Sengkang LNG substation at the Southern Sulawesi power system after the integration of Sidrap Wind Power Plant and new Sengkang LNG substation.

Arresters as lightning rod function provides protection for the transmission equipment and electrical [7–9] during strikes. Arrester at transmission lines works by limiting the over voltage to avoid damage to the protected equipment [10,11]. There are two models of arrester, namely the Fernandez model and the Pinceti and Giannettoni models [12]. Another protective device used for protection from lightning on system power is Metal Oxide Varistor (MOV). MOV is usually used for the medium and high voltage system. In the simulation, MOV is modelled based on the IEEE WG 3.4.11. Fig. 1 shows the circuit for equivalent model of arresters that simplified by Pinceti et.al. which represent two non-linear resistors with RL filter [13].

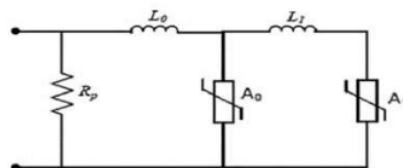


Figure 1. Pinceti's equivalent arrester model [14].

**3. Results and discussion**

This study evaluates the Southern Sulawesi power system performance when a lightning strikes occurs at a high 150 kV transmission line between Sengkang substation and Sengkang LNG substation at the Southern Sulawesi power system after the integration of Sidrap Wind Power Plant and new Sengkang LNG substation. The simulations were done by assuming 3 conditions:

*3.1. Without arrester*

Disruption of lightning strikes is assumed to happen at the 150 kV transmission line where no arrester on the system to observe the ability of the system to return to the condition of normal.

*3.2. Using conventional arresters*

The arrester used is assumed to be conventional arrester when lightning strikes happen at the 150 kV transmission line.

*3.3. Using Pinceti arresters model*

The arrester used is assumed to be Pinceti model arrester when lightning strikes happen at the 150 kV transmission line. Figs. 2 – 4 and table 1 shows the results of induced voltage for the 3 assumptions. Fig. 2 shows the induced lightning strikes voltage when a lightning strike happen at the 150 kV transmission line without arrester. As can be seen from Fig. 2, the induced voltage reaches up to 11 MV and it needs approximately 0.8 seconds to return to the normal operating voltage. Whereas Fig. 3 informs the induced lightning strikes voltage when a lightning strike happen at the 150 kV transmission line with conventional arrester. The induced voltage also reaches 11 MV, which does not give any significant improvement compare to without arrester, however, the time needed to return to its operating condition reduced to only 0.5 seconds. Fig. 4 informs the induced lightning strikes voltage when a lightning strike happen at the 150 kV transmission line with Pinceti arrester. It is

interesting that with Pinceti arrester model, the induced voltage can be reduced to 700 kV and the time to return to its normal operating voltage is only 0.1 seconds. Therefore, it is recommended to use the Pinceti arrester model for the Southern Sulawesi power system after the integration of Sidrap Wind Power Plant and new Sengkang LNG substation.

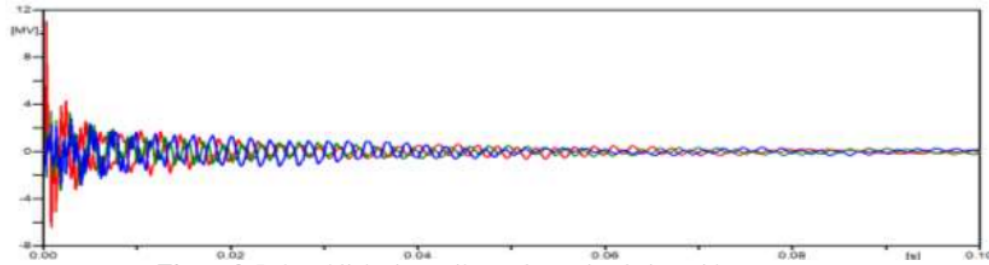


Figure 2. Induced lightning strikes voltage simulation without arrester.

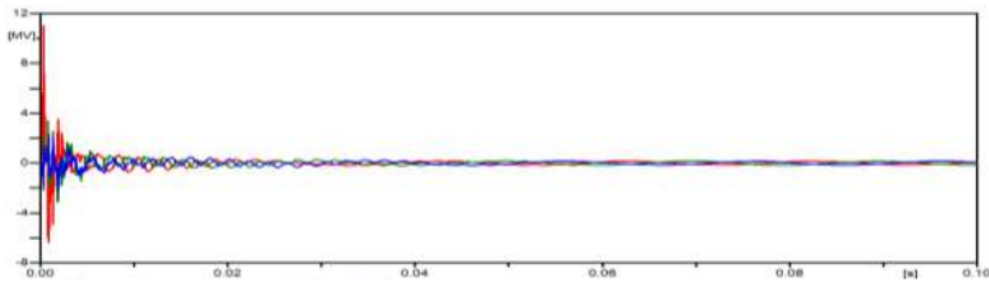


Figure 3. Induced lightning strikes voltage simulation with conventional arrester.

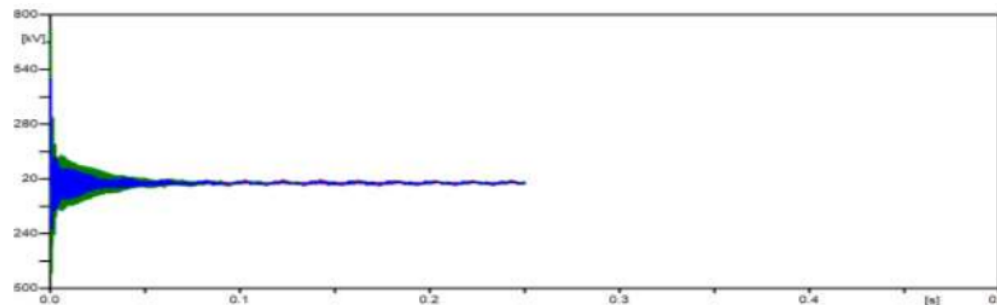


Figure 4. Induced lightning strikes voltage simulation with Pinceti's arrester model.

**Table 1** Simulation results.

Simulation	Time	Induced Voltage
Without Arrester	0.8 s	11 MV
Conventional Arrester	0.5 s	11 MV
Pinceti Arrester Model	0.1 s	700 kV

**4. Conclusion**

This study evaluates the Southern Sulawesi power system performance when a lightning strikes occurs at a high 150 kV transmission line between Sengkang substation and Sengkang LNG substation at the Southern Sulawesi power system after the integration of Sidrap Wind Power Plant and new Sengkang LNG substation. The simulations were done by assuming 3 conditions: without arrester; using conventional arresters and using Pinceti arresters model. The simulation results shows that without arrester and by using conventional arrester, the induced voltage because of the strikes reaches to 11 MV, whereas with Pinceti arrester model, the induced voltage is only 700 kV and the time to return to its normal operation voltage is only 0.1 seconds. Therefore, it is recommended to use the Pinceti arrester model for the Southern Sulawesi power system after the integration of Sidrap Wind Power Plant and new Sengkang LNG substation.

**Acknowledgments**

M.B. Nappu and A. Arief gratefully thank the Indonesian Ministry of Research, Technology and Higher Education for providing the research grant and their support in this work.

**References**

[1] Azis F, Arief A and Nappu M B 2017 Fuzzy logic based active power generation dispatching considering intermittent wind power plants output *2017 International Conference on Control, Electronics, Renewable Energy and Communications (ICCREC)* (IEEE) pp 116–21

[2] Lastomi D, Budiprayitno S, Setiadi H and Ashafani A 2017 Design Blade Pitch Controller of Wind Turbine for Load Frequency Control (LFC) using Improved Differential Evolution Algorithm (IDEA) *International Conference on Advanced Mechatronics, Intelligent Manufacture, and Industrial Automation (ICAMIMIA)* (Surabaya)

[3] Arief A, Nappu M B, Yin X, Zhou X and Dong Z Y 2009 Under voltage load shedding design with modal analysis approach *8th International Conference on Advances in Power System Control, Operation and Management (APSCOM 2009)* (IET) pp 1–5

[4] Nappu M B, Bachtiar M I and Arief A 2016 Network losses reduction due to new hydro power plant integration *2016 3rd International Conference on Information Technology, Computer, and Electrical Engineering (ICITACEE)* (IEEE) pp 181–5

[5] Arief A and Nappu M B 2016 Voltage drop simulation at Southern Sulawesi power system considering composite load model *2016 3rd International Conference on Information Technology, Computer, and Electrical Engineering (ICITACEE)* (IEEE) pp 169–72

[6] Zoro R and Mefiardhi R 2006 Insulator damages due to lightning strikes in power system: some experiences in indonesia *2006 IEEE 8th International Conference on Properties & applications of Dielectric Materials* (IEEE) pp 677–82

[7] Hossam-Eldin A A and Selim F 2008 Study and design of lightning protection for HV transmission lines in the Egyptian Unified Network *2008 12th International Middle-East Power System Conference* (IEEE) pp 18–23

[8] Furukawa S, Usuda O, Isozaki T and Irie T 1989 Development and applications of lightning arresters for transmission lines *IEEE Trans. Power Deliv.* **4** 2121–9

[9] Romualdo-Torres C, Ramirez-Gonzalez M and Escamilla-Paz A 2016 Lightning outage transmission line reliability improvement with surge arresters *2016 IEEE/PES Transmission and Distribution Conference and Exposition (T&D)* (IEEE) pp 1–5

[10] Neto E T W, Da Costa E G and Maia M J A 2009 Artificial neural networks used for ZnO

- arresters diagnosis *IEEE Trans. Power Deliv.* **24** 1390–5
- [11] Utomo B T, Nappu M B, Said S M and Arief A 2018 The Placement of the Transmission Lightning Arrester (TLA) at 150 kV Network using Fuzzy Logic *2018 10th International Conference on Information Technology and Electrical Engineering (ICITEE)* (IEEE) pp 347–52
- [12] Pinceti P and Giannettoni M 1999 A simplified model for zinc oxide surge arresters *IEEE Trans. Power Deliv.* **14** 393–8
- [13] Magro M C, Giannettoni M and Pinceti P 2004 Validation of ZnO surge arresters model for overvoltage studies *IEEE Trans. Power Deliv.* **19** 1692–5
- [14] Abd-Allah M A, Said A and Ali M N 2015 A novel lightning protection technique of wind turbine components *J. Eng.* **2015** 348–53

## ORIGINALITY REPORT

---

14%

SIMILARITY INDEX

11%

INTERNET SOURCES

13%

PUBLICATIONS

7%

STUDENT PAPERS

---

## PRIMARY SOURCES

---

1

[centaur.reading.ac.uk](http://centaur.reading.ac.uk)

Internet Source

3%

2

[journals.ukitoraja.ac.id](http://journals.ukitoraja.ac.id)

Internet Source

2%

3

[repository.tudelft.nl](http://repository.tudelft.nl)

Internet Source

2%

4

Dhany Harmeidy Barus, Rinaldy Dalimi. "The Integration of Wind Power Plants to Southern Sulawesi Power System", 2020 International Conference on Electrical, Communication, and Computer Engineering (ICECCE), 2020

Publication

2%

5

Syahrul Mustafa, Ardiaty Arief, Muhammad Bachtiar Nappu. "Optimal capacitor placement and economic analysis for reactive power compensation to improve system's efficiency at Bosowa Cement Industry, Maros", 2018 International Conference on Information and Communications Technology (ICOIACT), 2018

Publication

1%

---

6	ijtech.eng.ui.ac.id Internet Source	1 %
7	businessdocbox.com Internet Source	1 %
8	Submitted to Universitas Diponegoro Student Paper	1 %
9	Dhany Harmeidy Barus, Rinaldy Dalimi. "Determining Optimal Operating Reserves Toward Wind Power Penetration in Indonesia Based on Hybrid Artificial Intelligence", IEEE Access, 2021 Publication	<1 %

Exclude quotes  On

Exclude matches  < 5 words

Exclude bibliography  On